

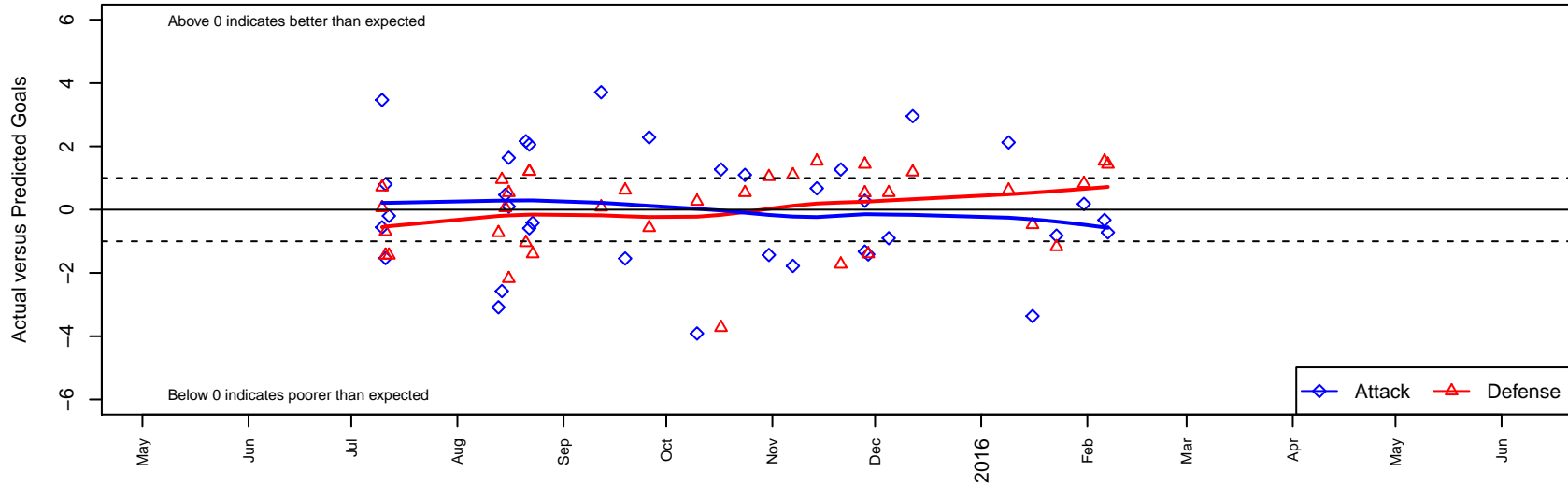
NSC Galaxy B03

Northshore SC
 Woodinville, WA
 B03 total strength=745
 attack=1.04 defense=0.66
 fall league = NPSL Div 1 U12

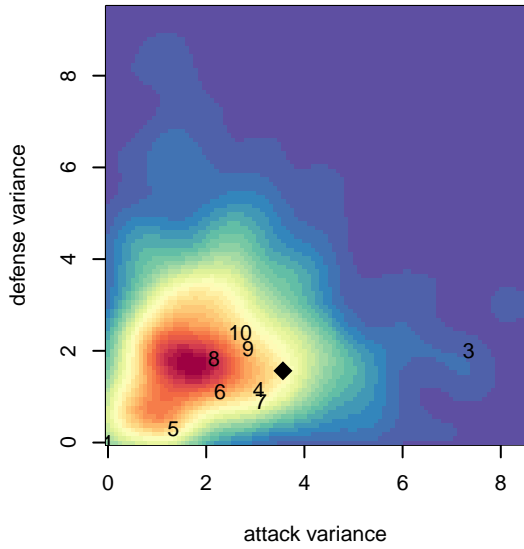
alt names used:
 NSC Galaxy
 NSC GALAXY ()
 NSC B03 Galaxy
 NSC Galaxy
 NSC Galaxy

Venues played:
 2015 KCC BU12 Gold
 2015 Bigfoot Group B U12
 2015 Xtreme Cup BU12 Silver
 2015 NPSL Division 1 U12
 2015 Cranberry Cup U12
 2015 Founders Cup B03

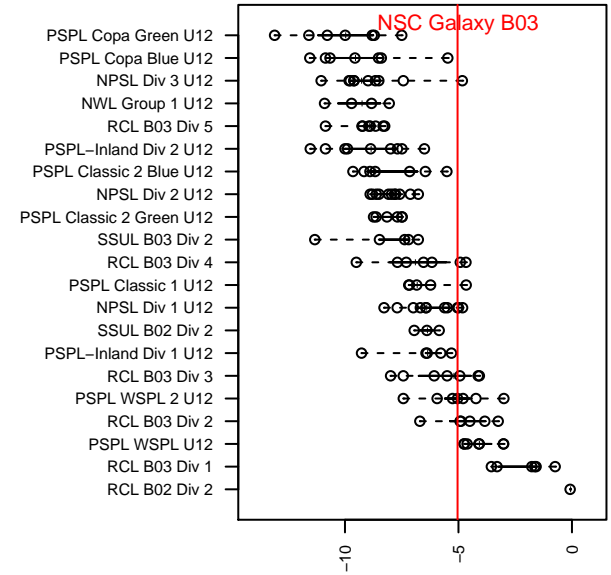
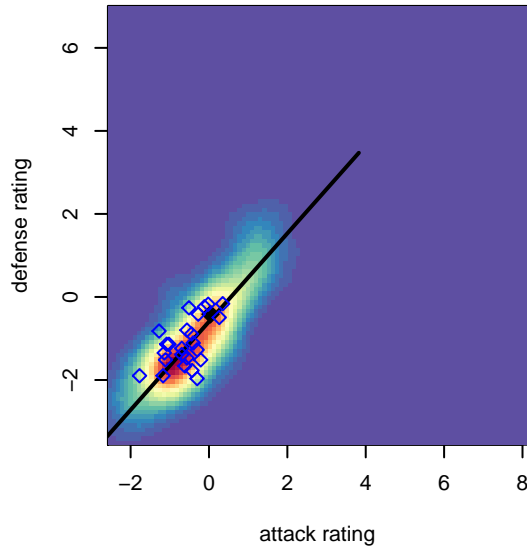
NSC Galaxy B03
 Dots are actual minus expected GF (blue circles) and GA (red triangles).
 Blue line is smoothed change in attack strength. Red is smoothed change in defense strength.



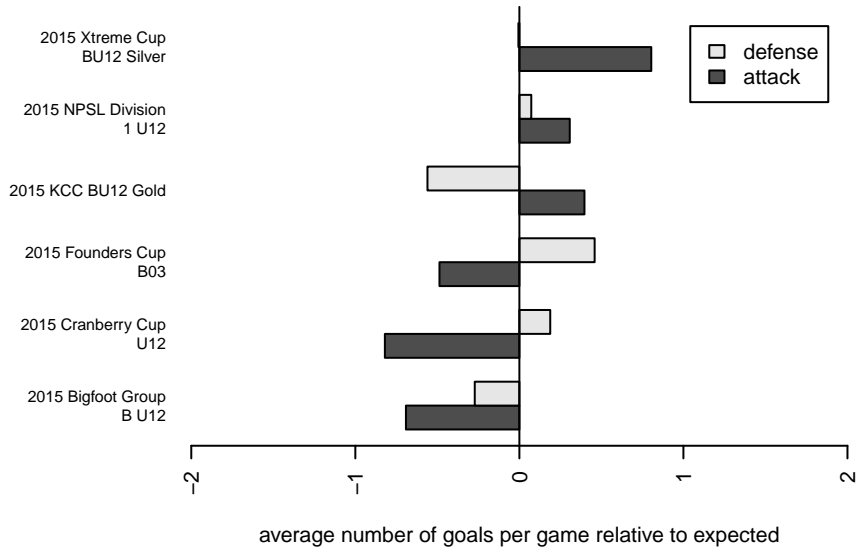
**attack and defense variance (black dot)
relative to other teams
and top 10 in region**



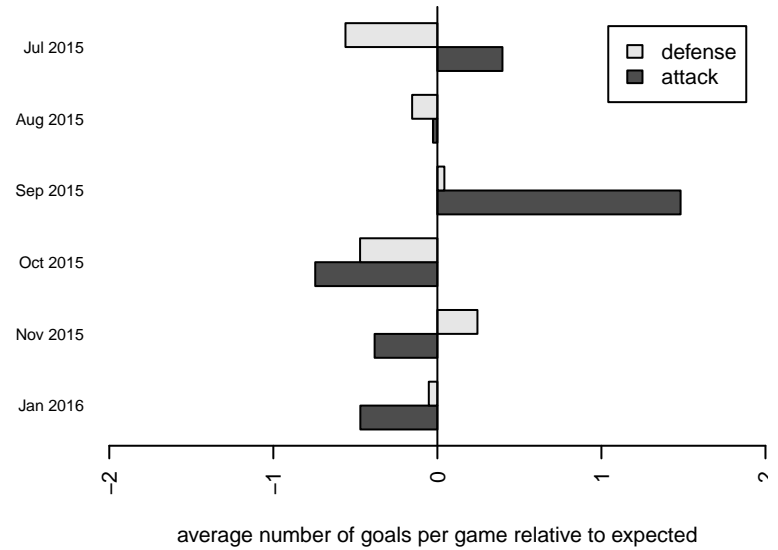
**attack and defense rating
relative to others at age
and all opponents in last 13 months**



Performance relative to 13 month average



Performance relative to 13 month average



date	home		away		venue	pred.home	pred.away
2016-02-07	NSC Galaxy B03	1	Crossfire Select Pombo B03	0	2015 Founders Cup B03	1.72	1.43
2016-02-06	NSC Galaxy B03	1	NSC Nitro B03	0	2015 Founders Cup B03	1.33	1.53
2016-01-31	NSC Galaxy B03	6	BIFC Blue B03	0	2015 Founders Cup B03	5.82	0.83
2016-01-23	NSC Galaxy B03	5	BIFC Blue B03	2	2015 Founders Cup B03	5.82	0.83
2016-01-16	Seattle United S White B03	1	NSC Galaxy B03	4	2015 Founders Cup B03	0.52	7.36
2016-01-09	NSC Galaxy B03	6	Mukilteo Rush B03	0	2015 Founders Cup B03	3.87	0.61
2015-12-12	NSC Galaxy B03	6	Storm King B03	0	2015 NPSL Division 1 U12	3.05	1.19
2015-12-05	Mercer Island FC Arsenal B03	0	NSC Galaxy B03	4	2015 NPSL Division 1 U12	0.54	4.90
2015-11-29	NSC Fury B03	2	NSC Galaxy B03	2	2015 Cranberry Cup U12	0.60	3.42
2015-11-28	NSC Galaxy B03	2	Crossfire Select Pombo B03	0	2015 Cranberry Cup U12	1.72	1.43
2015-11-28	NSC Galaxy B03	0	NSC Nitro B03	1	2015 Cranberry Cup U12	1.33	1.53
2015-11-21	NSC Galaxy B03	3	Nortac Colibri B03	4	2015 NPSL Division 1 U12	1.73	2.27
2015-11-14	NSC Galaxy B03	2	NSC Nitro B03	0	2015 NPSL Division 1 U12	1.33	1.53
2015-11-07	Seattle United W Blue B03	0	NSC Galaxy B03	1	2015 NPSL Division 1 U12	1.10	2.78
2015-10-31	NSC Galaxy B03	1	Seattle United Shoreline Blue B03	0	2015 NPSL Division 1 U12	2.43	1.04
2015-10-24	NSC Galaxy B03	6	Mercer Island FC Arsenal B03	0	2015 NPSL Division 1 U12	4.90	0.54
2015-10-17	Nortac Colibri B03	6	NSC Galaxy B03	3	2015 NPSL Division 1 U12	2.27	1.73
2015-10-10	Seattle United S Blue B03	1	NSC Galaxy B03	1	2015 NPSL Division 1 U12	1.26	4.91
2015-09-26	Crossfire Select Pombo B03	2	NSC Galaxy B03	4	2015 NPSL Division 1 U12	1.43	1.72
2015-09-19	Crossfire Select Barnes B03	0	NSC Galaxy B03	2	2015 NPSL Division 1 U12	0.62	3.54
2015-09-12	NSC Galaxy B03	5	Whatcom Rangers Blue B03	1	2015 NPSL Division 1 U12	1.29	1.08
2015-08-23	NSC Fury B03	2	NSC Galaxy B03	3	2015 Xtreme Cup BU12 Silver	0.60	3.42
2015-08-22	NSC Galaxy B03	5	Kent City White B03	0	2015 Xtreme Cup BU12 Silver	5.59	1.21
2015-08-22	NSC Galaxy B03	6	Lakewood FC United B03	0	2015 Xtreme Cup BU12 Silver	3.94	1.21
2015-08-21	RSA Elite B03	2	NSC Galaxy B03	6	2015 Xtreme Cup BU12 Silver	0.96	3.84
2015-08-16	Mercer Island FC Arsenal B03	0	NSC Galaxy B03	5	2015 Bigfoot Group B U12	0.54	4.90
2015-08-16	Eastside FC Blue B03	4	NSC Galaxy B03	3	2015 Bigfoot Group B U12	1.82	1.36
2015-08-15	Eastside FC Grey B03	1	NSC Galaxy B03	4	2015 Bigfoot Group B U12	1.06	3.53

date	home		away		venue	pred.home	pred.away
2015-08-14	Lake Hills Lightning B03	0	NSC Galaxy B03	2	2015 Bigfoot Group B U12	0.95	4.57
2015-08-13	Lake Stevens Scorpions B03	2	NSC Galaxy B03	4	2015 Bigfoot Group B U12	1.27	7.09
2015-07-12	Kent United Gonzalez B03	4	NSC Galaxy B03	1	2015 KCC BU12 Gold	2.56	1.20
2015-07-11	Kent United Gonzalez B03	4	NSC Galaxy B03	2	2015 KCC BU12 Gold	2.56	1.20
2015-07-11	NSC Galaxy B03	5	Southlake Select Eagles Red B03	1	2015 KCC BU12 Gold	6.53	0.30
2015-07-10	NSC Galaxy B03	2	Kent United Green B03	0	2015 KCC BU12 Gold	2.56	0.71
2015-07-10	Eastside FC Grey B03	1	NSC Galaxy B03	7	2015 KCC BU12 Gold	1.06	3.53